

B

BJS 201905

1

B - /

B

2

B

B /

3

GB/T 6682

3.1 CH₃OH

3.2 C₂H₃N

3.3 CH₂O₂

3.4 NH · H O

3.5 0.1% : 3.3 1 mL 1000 mL

3.6 50% : 500 mL 3.1 1 L

3.7 0.1% 1 mL 3.3 3.6 1000 mL

3.8 0.1% 1 mL 3.3 3.2 1000 mL

3.9 0.1% 0.1 mL 3.3 35 mL 3.2

100 mL

3.10 5% 5 mL 3.4 100mL

3.11 B

B

CAS 1 99%

1

B

CAS

		CAS		
--	--	-----	--	--

$$= \frac{x}{\times 1000} \times 1$$

X *B* mg/kg
c *B* ng/mL
V mL
m g ;

8

10%

9

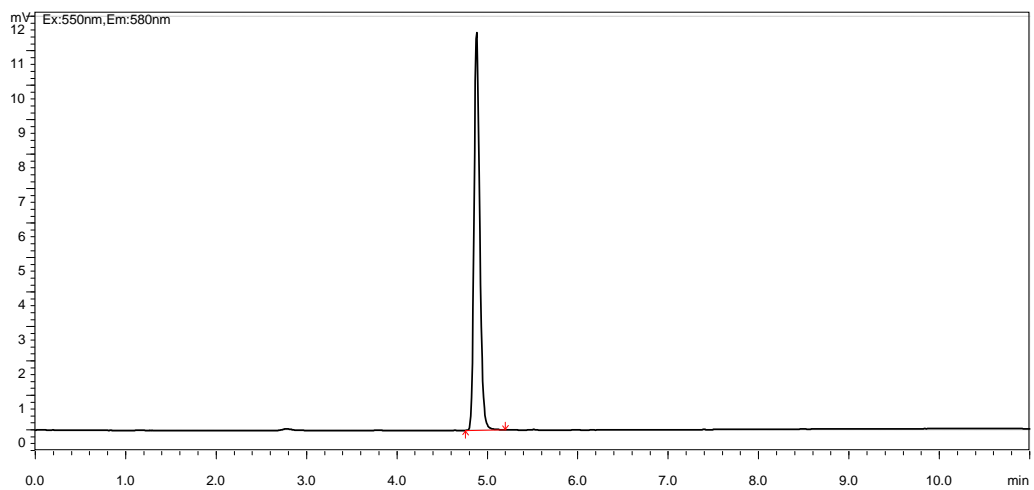
2 g 1 g *B* 0.0025 mg/kg
 0.005 mg/kg 0.0025 mg/kg 0.005 mg/kg

10

B *B*

A

B



A.1

B

5 ng/mL

B

B

B.1. - /

- a) C₁₈ 100×3.0 mm 1.7 μm
b) A 0.1% 3.8 B 0.1% 3.9

B.1

- c) 0.4 mL/min
d) 40
e)
h) B.2

B.1

min	A %	B %
0.00	80	20
1.5	80	20
2.5	5	95
3.5	5	95
4.5	80	20
5.5	80	20

B.2

- a) ESI
b) MRM
c)
d) 5500 V
e) 550
f) 60.0 psi
g) 50.0 psi
h) 25.0 psi
i) B.2

	B.2	B	
	m/z	V	eV
B	443.2/399.3*	20	59
	443.2/355.1	20	81

*

B

B.3.

B.1 B.2

±2.5%

B.3

B

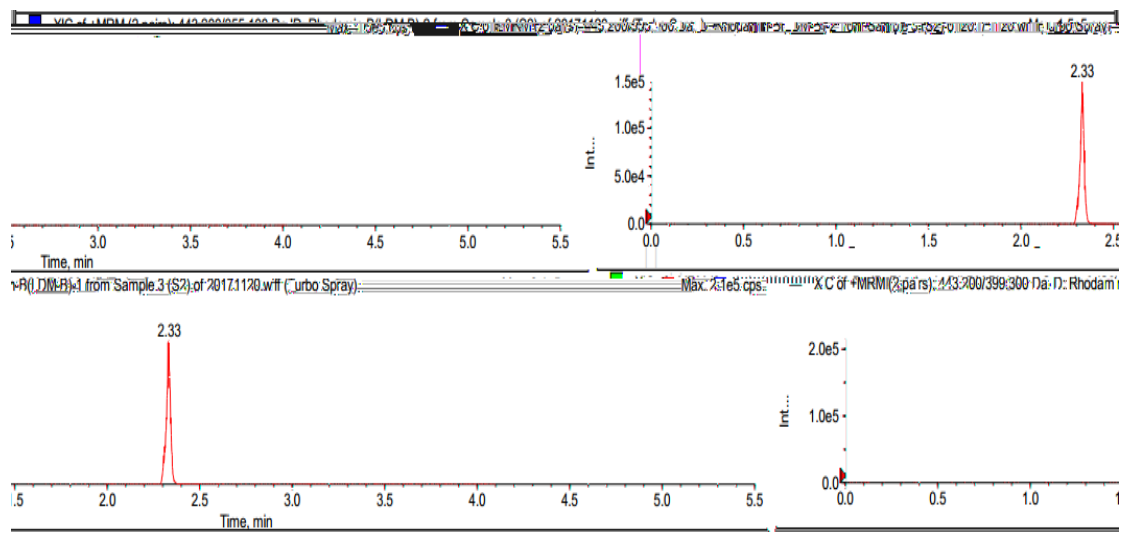
B.3

%	>50	>20~50	>10~20	
%	±20	±25	±30	±50

B

MRM

B.1



B.1

B

